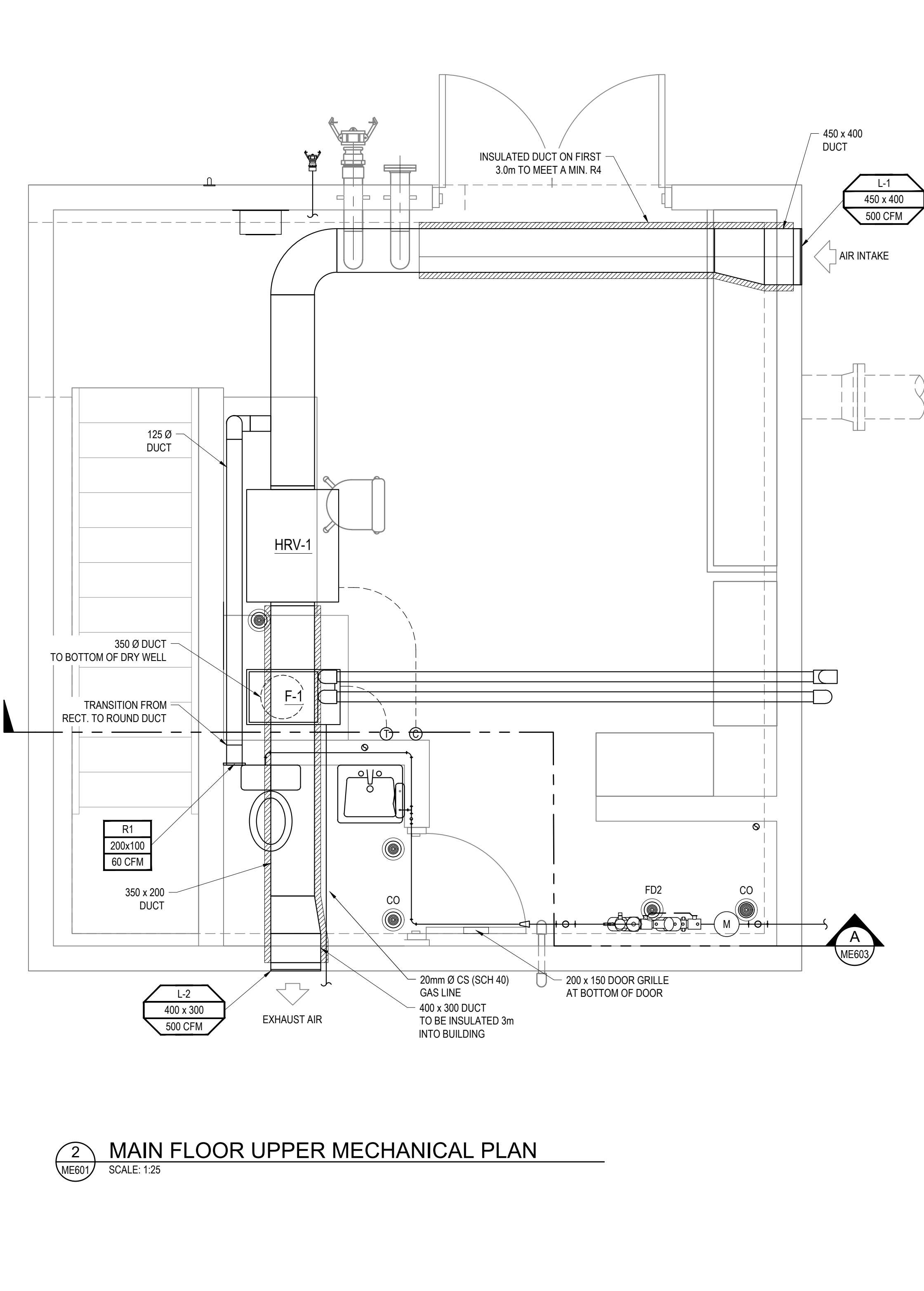
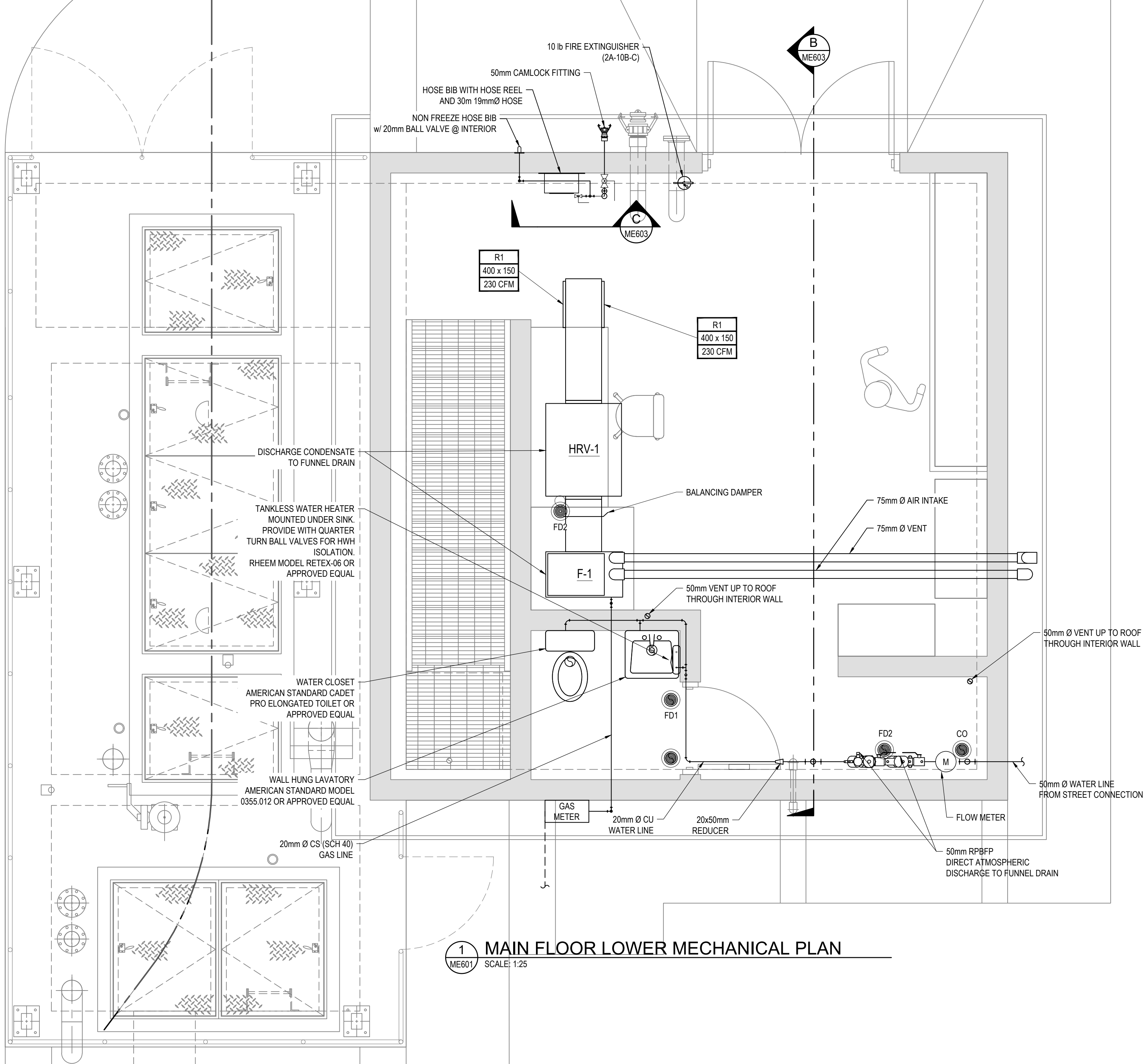
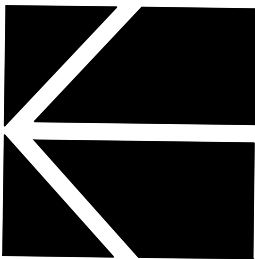


Allen Li | Jan. 6, 23 | G:\Projects\150001570015719\_Cambrian\_Sanitary\_Lift\_Station\02\_Drafting\203\_DWG600\_Mechanical\15719-Building Mechanical.dwg

LOUVERS AND DAMPERS								
TAG	MAKE	MODEL	DESCRIPTION	SIZE	HEIGHT	FLOW		REMARKS
				WIDTH		CFM	L/S	
L1	E.H.PRICE	DE439	INTAKE LOUVER	450	400	500	236	PROVIDE ALUMINUM INSECT SCREEN, MOUNTING FLANGE AND BAKED ENAMEL FINISH TO MATCH BUILDING EXTERIOR TRIM.
L2	E.H.PRICE	DE439	DISCHARGE LOUVER	400	300	500	236	PROVIDE ALUMINUM INSECT SCREEN, MOUNTING FLANGE AND BAKED ENAMEL FINISH TO MATCH BUILDING EXTERIOR TRIM.

HRV SCHEDULE								
TAG	MAKE	MODEL	DESCRIPTION	AIRFLOW		MOTOR		REMARKS
				CFM	L/S	RPM	ELECTRICAL	
HRV-1	LIFEBREATH	530ERV	ENERGY RECOVERY VENTILATOR FOR AIR CHANGES AND HEAT RECOVERY.	700/600	330/283	1450	120V/1Ph/60Hz	EACH AIR STREAM HAS ONE SINGLE SHAFT MOTOR SET TO RUN AT LOW SPEED CONTINUOUSLY. USE LIFEBREATH CONTROL 99-BC04

FURNACE SCHEDULE									
TAG	MAKE	MODEL	DESCRIPTION	CAPACITY				ELECTRICAL	REMARKS
				INPUT		OUTPUT			
				BTU	KW	BTU	KW		
F-1	Keeprite	N95ESN	USED TO PROVIDE BUILDING HEAT. THERMOSTAT TO BE SET TO 15 DEGREES CELCIUS.	60,000	17.6	58,000	17	120V/1Ph/60Hz	SETUP FOR DOWNFLOW OPERATION. PROVIDE HORIZONTAL COMBUSTION AIRMENT KIT INCLUDING CONCENTRIC ADAPTER. PROVIDE BASIC THERMOSTAT HONEYWELL PRO 1000.



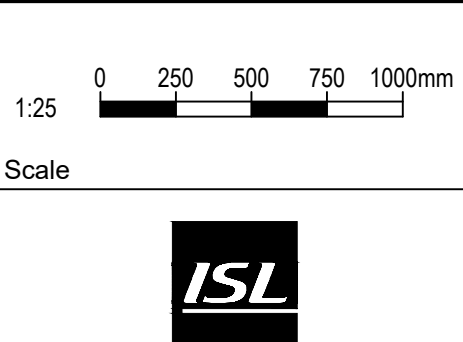
NOTE: THIS DRAWING IS  
HALF SCALE WHEN PRINTED  
TO 11" x 17" FORMAT

FOR APPROVAL

No.	DESCRIPTION	BY	DATE
2	FOR APPROVAL	SM	Jan. 6, 2023
1	FOR APPROVAL	SM	Nov. 23, 2022



PERMIT TO PRACTICE  
ISL Engineering and Land Services Ltd.  
RM Signature: *Stephen A. McGeachy*  
RM APEGA ID: 94184  
Date: 2023-01-06  
PERMIT NUMBER: P 4741  
The Association of Professional Engineers  
and Geoscientists of Alberta



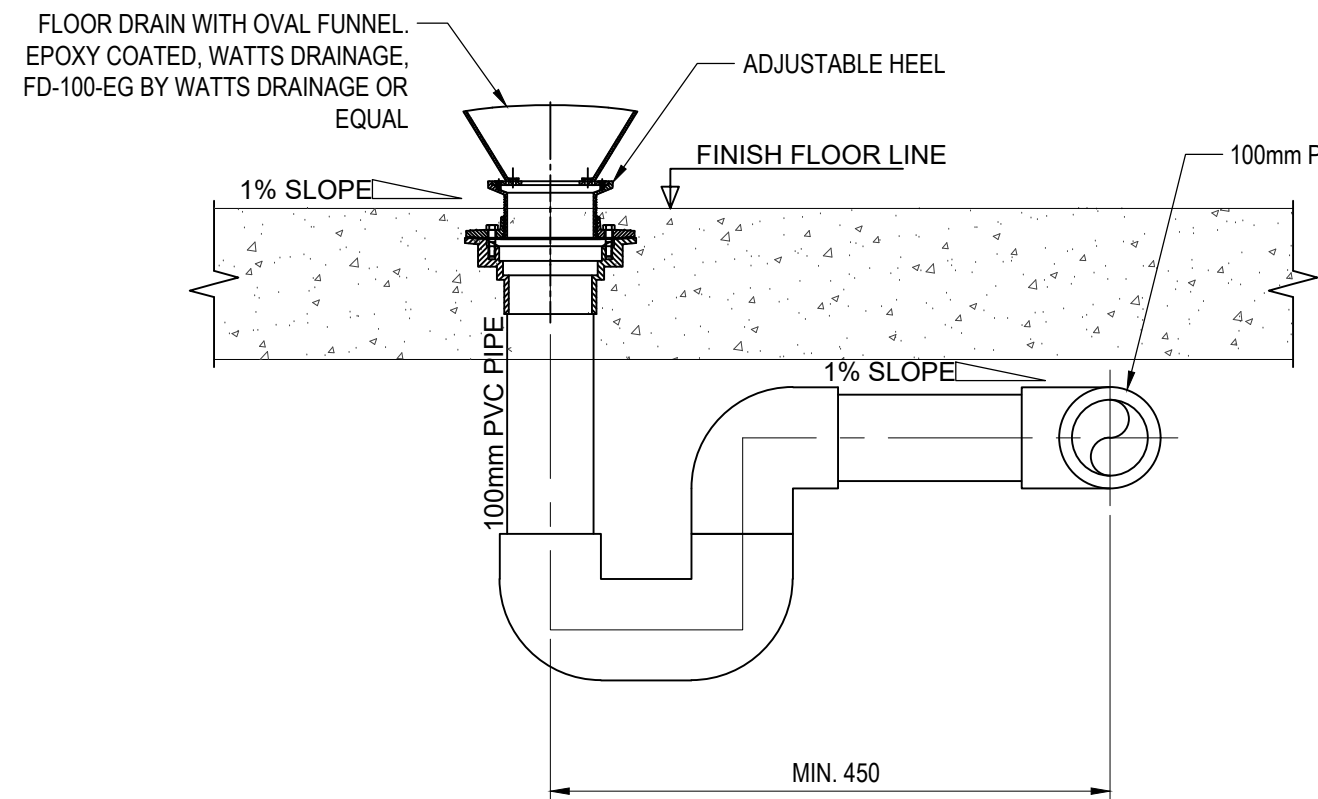
MATTAMY (SHERWOOD PARK) LTD		
HEARTHSTONE SANITARY LIFT STATION		
Drawn: AL	Design Checked: SM	Date: Nov. 23, 2022
Designed: DB	Discipline Review: JRK	Date: Nov. 23, 2022

MECHANICAL LOWER AND UPPER MAIN FLOOR PLAN	
---	--

Drawing No.  
15719  
ME  
601  
Sheet No.  
601

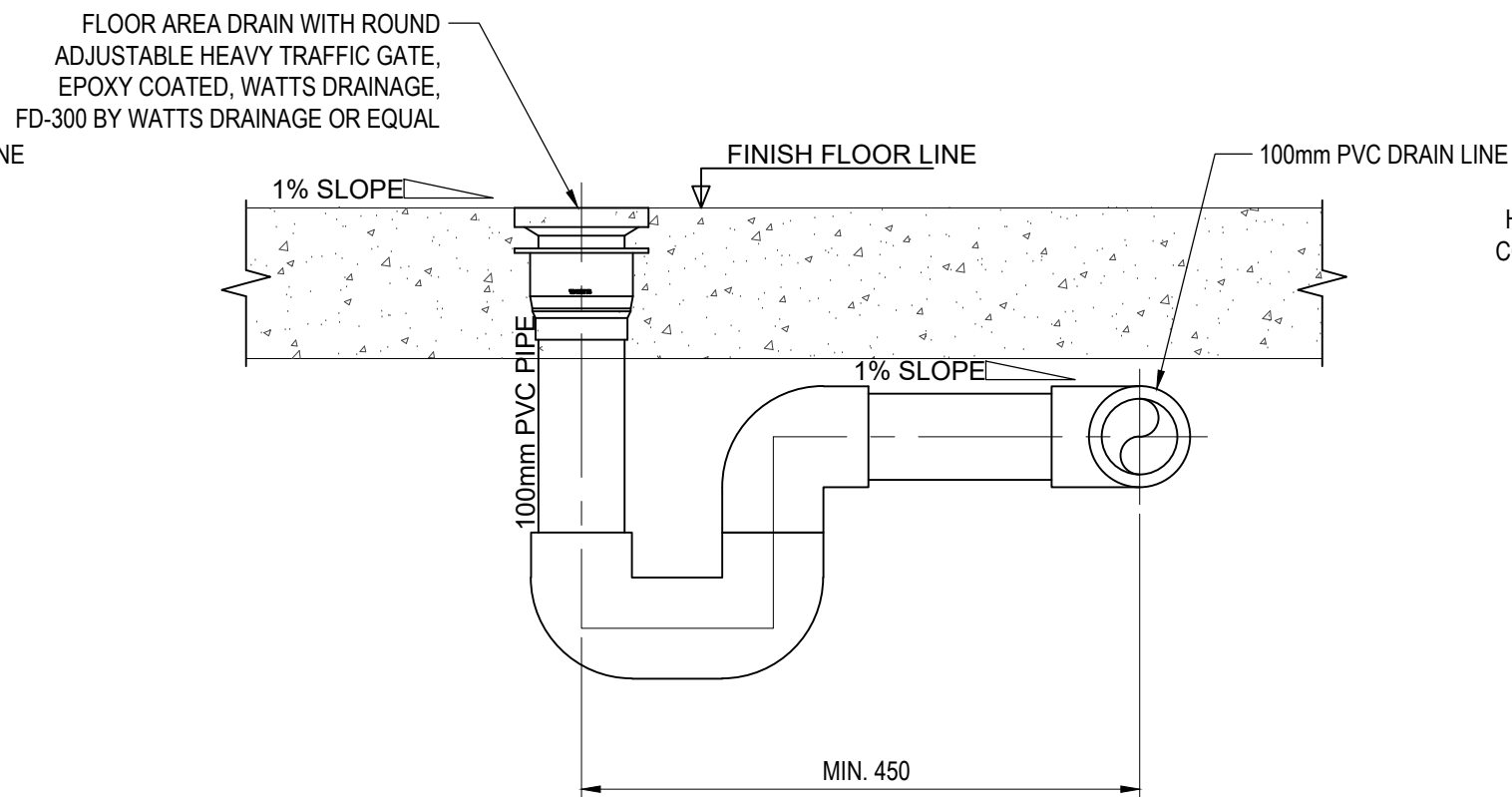


Allen Li | Jan. 6, 23 | G:\Projects\150001570015719\_Cambrian\_Sanitary\_Lift\_Station\02\_CADD\02\_Drafting\203\_DWG600\_Mechanical\15719-Building Mechanical.dwg



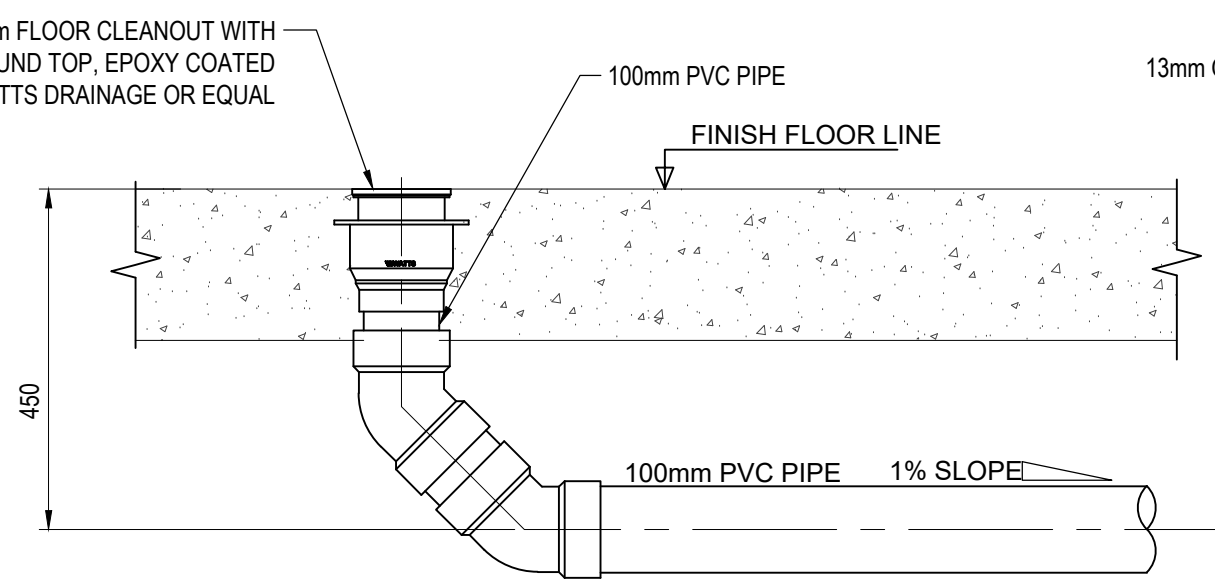
FUNNEL FLOOR DRAIN (FD2) DETAIL

N.T.S



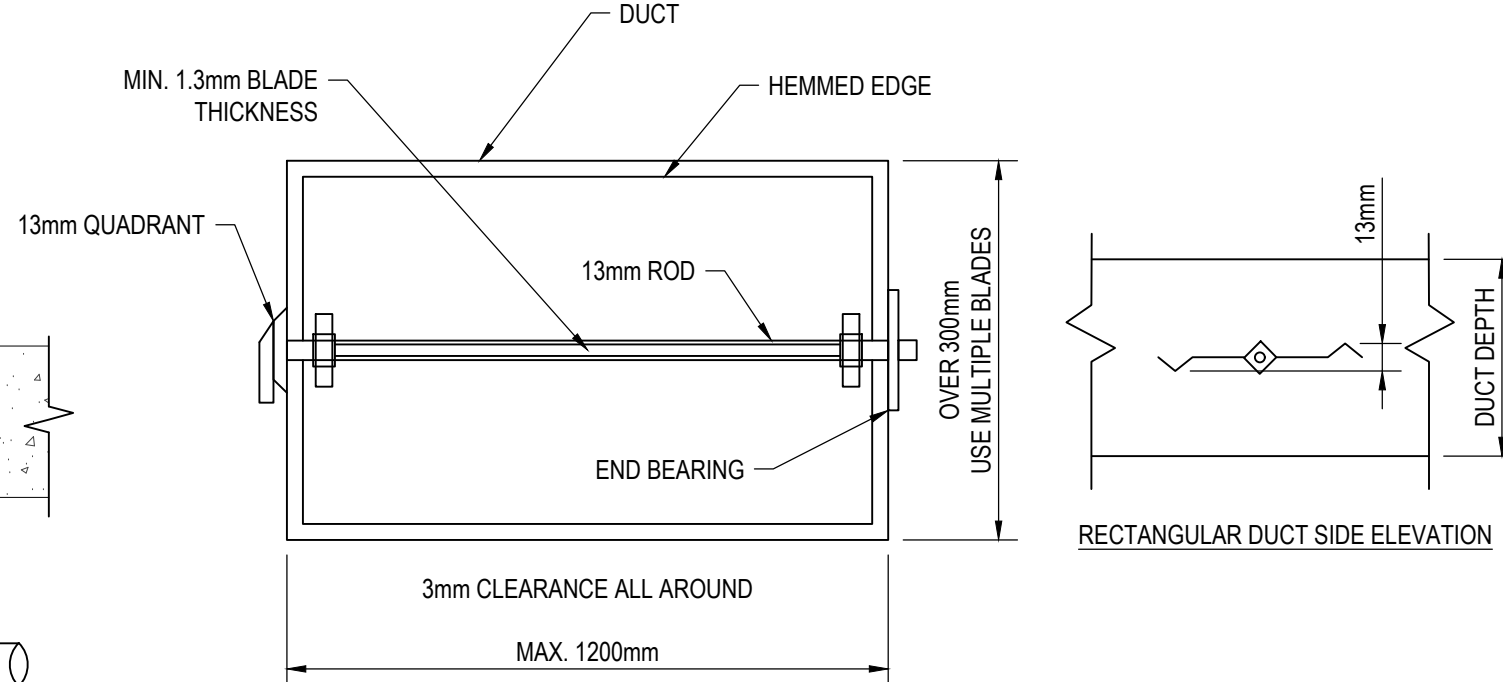
FLOOR DRAIN (FD1) DETAIL

N.T.S



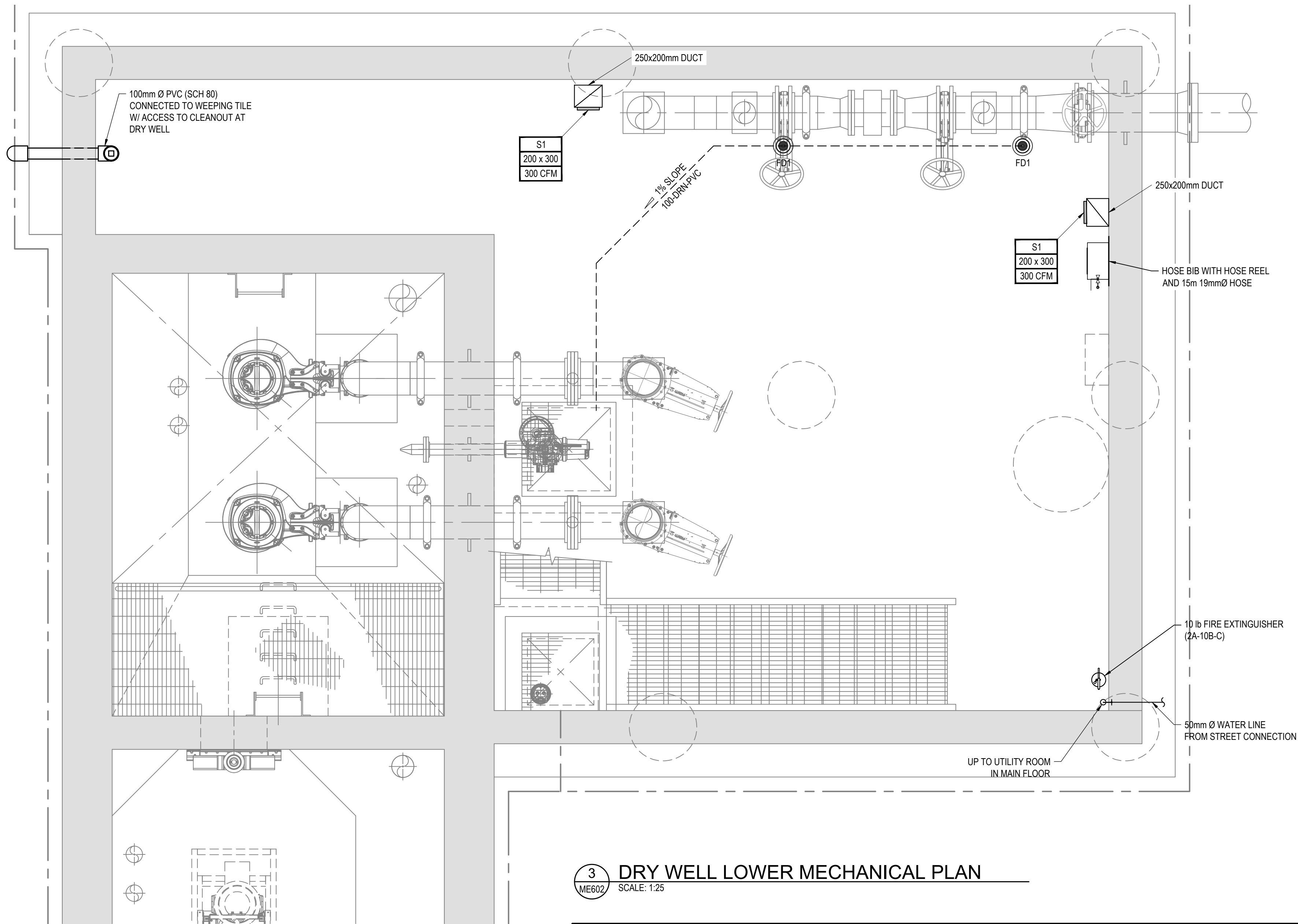
CLEAN OUT DETAIL

N.T.S



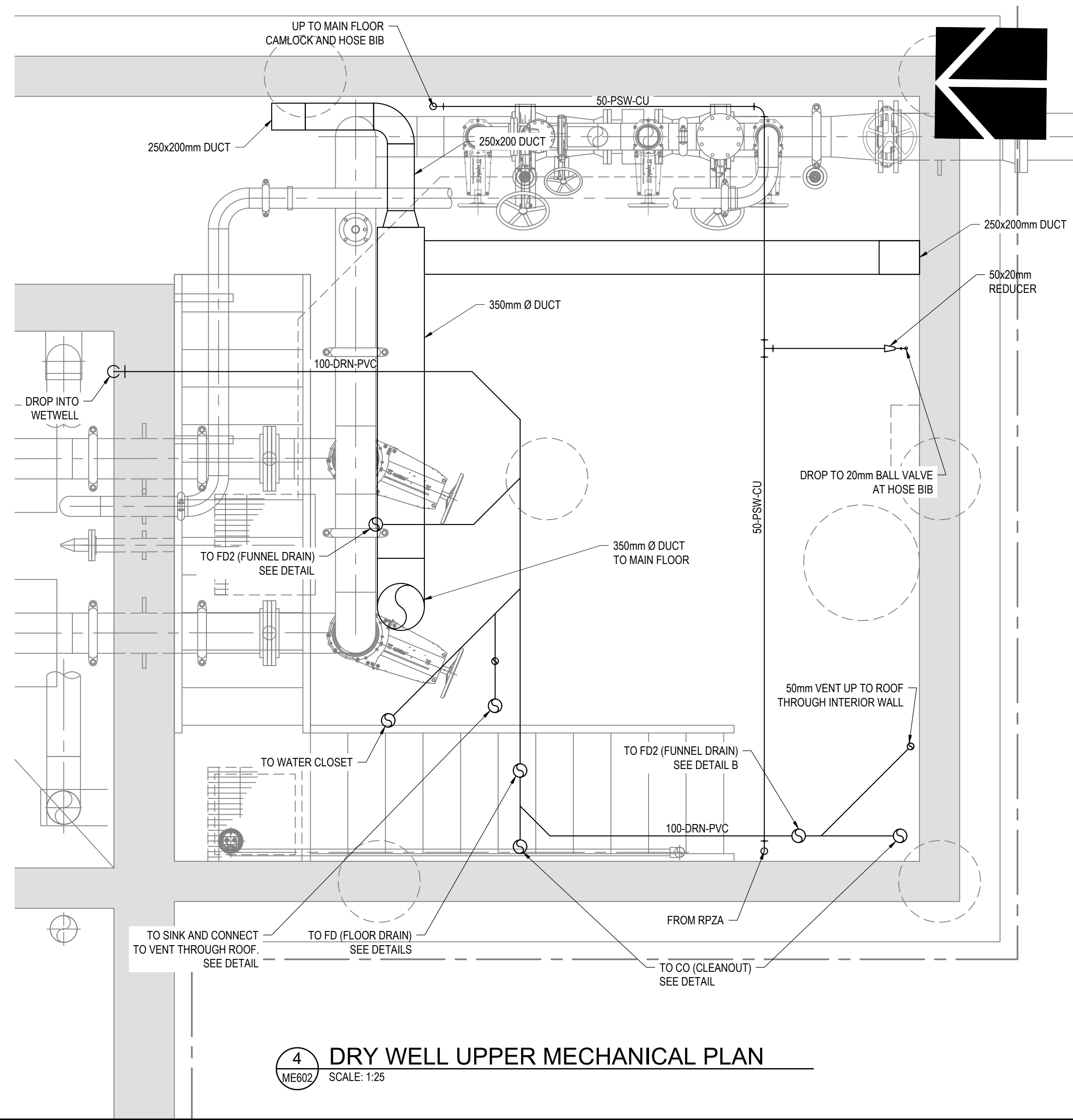
BALANCING DAMPER DETAIL

N.T.S



3 DRY WELL LOWER MECHANICAL PLAN

ME602 SCALE: 1:25



4 DRY WELL UPPER MECHANICAL PLAN

ME602 SCALE: 1:25

NOTE: THIS DRAWING IS  
HALF SCALE WHEN PRINTED  
TO 11" x 17" FORMAT

FOR APPROVAL

No.	DESCRIPTION	BY	DATE
2	FOR APPROVAL	SM	Jan. 6, 2023
1	FOR APPROVAL	SM	Nov. 23, 2022

REVISIONS



PERMIT TO PRACTICE
ISL Engineering and Land Services Ltd.
RM Signature: <i>Stephen A. McCreary</i>
RM APEGA ID: 94184
Date: 2023-01-06
PERMIT NUMBER: P 4741
The Association of Professional Engineers and Geoscientists of Alberta

1:25

Scale

0 250 500 750 1000mm



MATTAMY (SHERWOOD PARK) LTD

HEARTHSTONE SANITARY  
LIFT STATION

Drawn: AL	Design Checked: SM	Date: Nov. 23, 2022
Designed: DB	Discipline Review: JRK	Date: Nov. 23, 2022

MECHANICAL  
LOWER AND UPPER DRY WELL PLAN  
AND DETAILS

Drawing No.

15719  
ME  
602

Sheet No.

602



